

UNDP-GEF Midterm Review Terms of Reference of Expanding the Protected Area System to Incorporate Important Aquatic Ecosystems Project

1. INTRODUCTION

This is the Terms of Reference (ToR) for the UNDP-GEF Midterm Review (MTR) of the *medium-sized project* titled *Expanding the Protected Area System to Incorporate Important Aquatic Ecosystems Project* (PIMS 4620) implemented through the Bangladesh Forest Department, Ministry of Environment, Forest and climate Change which is to be undertaken in 2018. The project started on the 30.06.2015 and is in its *third* year of implementation. In line with the UNDP-GEF Guidance on MTRs, this MTR process was initiated before the submission of the second Project Implementation Report (PIR). This ToR sets out the expectations for this MTR. The MTR process must follow the guidance outlined in the document *Guidance For Conducting Midterm Reviews of UNDP-Supported, GEF-Financed Projects* (http://web.undp.org/evaluation/documents/guidance/GEF/mid-term/Guidance_Midterm%20Review%20_EN_2014.pdf).

2. PROJECT BACKGROUND INFORMATION

Project Title: Expanding the Protected Area System to Incorporate Important Aquatic Ecosystems

Sponsoring Ministry/Division: Ministry of Environment and Forests

Implementing Agency: Forest Department & Implementing Co-partner : UNDP

Partner Organization(NGO): IUCN-CNRS and Community Development Centre(CODEC)
Bangladesh

The project was designed to achieve the following goals and objectives:

Goal: Contribute to the sustainable management of important aquatic ecosystems of the Sundarbans.

Objectives:

- (i) Introduce an effective management system in the existing Protected Areas established for dolphin conservation in the Sundarbans;
- (ii) Expand the coverage of dolphin protected areas in and around the Sundarbans;
- (iii) Enhance alternative livelihood options for local fisher folk to reduce their dependency on aquatic resources;
- (iv) Enrich knowledge and information base of aquatic habitats in the region.
- (v) Provide sectoral policy recommendation for aquatic ecosystem friendly practices.

OUTCOME 1: Important aquatic ecosystems of the Sundarbans supporting the globally threatened species of cetaceans conserved.

OUTCOME 2: Community-based ecosystems management systems in place to support aquatic biodiversity conservation

Project Implementation Period

Date of Commencement: 01 July 2016

Date of Completion: 31 December 2019

Justification of the project:

The project will assist the country in ‘pursuing environment friendly development’ and thus contribute to progress towards implementing the country’s Perspective Plan or Vision 2021.

The project will contribute to achieve the country’s goals and objectives of the 7th Five year plan (2016-2020) as it will assist in implementation of the Forestry Sub-sector strategy “Due importance will be given to the Sundarbans Mangrove Forest for its biodiversity conservation. Different measures will be taken to conserve and protect wildlife...” and Fishery Sub-Sector strategy “Establish and maintain fish and wetland sanctuaries which will comprise complete ban on fishing in certain eco-sensitive areas like Sundarbans...”. The project will also help in achieving the following key objective of the 7th Five Year Plan relating to climate change, environment and disaster management:

To ensure no new extinctions of globally and nationally threatened species (through the followings):

- i. Conserve and protect the eco-system for bio-diversity and overall environmental stability
- ii. Initiate actions with regard to obligations under international treaties and conventions regarding conservation of biodiversity regional, and global biodiversity problems.

The project is aligned with the Sustainable Development Goal-14 ‘sustainably use the oceans, seas and marine resources for sustainable development’. It will contribute to achieve the following targets of the goal.

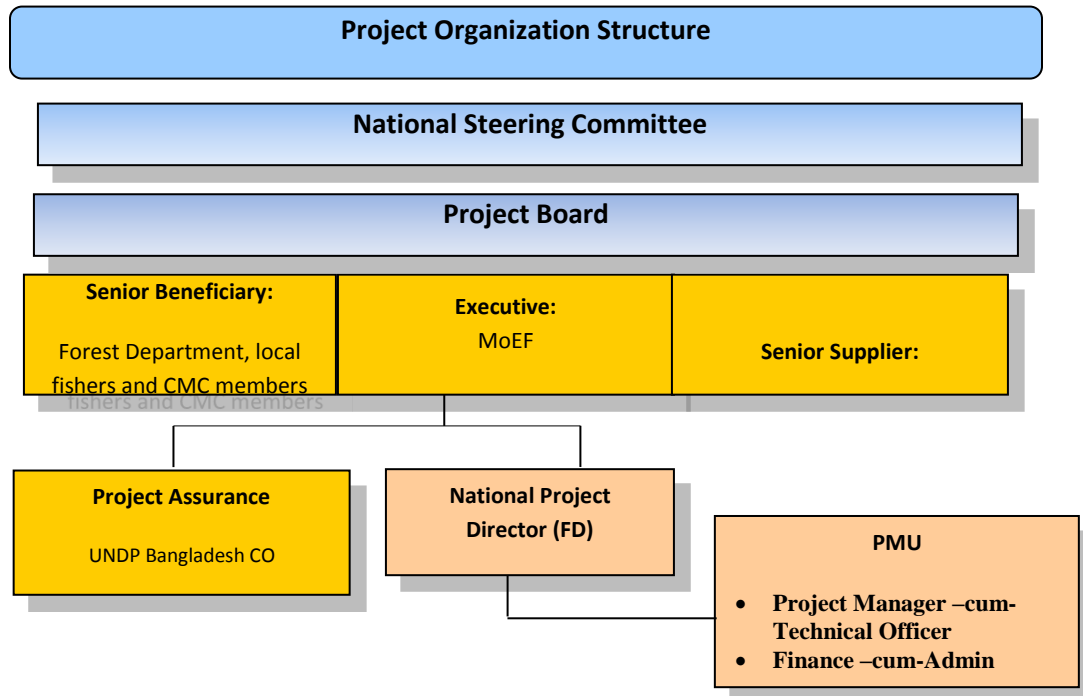
Target- 14.2: By 2020, sustainably manage and protect marine and coastal ecosystems to avoid significant adverse impacts, including by strengthening their resilience, and take action for their restoration in order to achieve healthy and productive oceans. Target- 14.4 : By 2020, effectively regulate harvesting and end overfishing, illegal, unreported and unregulated fishing and destructive fishing practices and implement science-based management plans, in order to restore fish stocks in the shortest time feasible, at least to levels that can produce maximum sustainable yield as determined by their biological characteristics. Target- 14.5 : By 2020, conserve at least 10 per cent of coastal and marine areas, consistent with national and international law and based on the best available scientific information.

The The United Nations Development Assistance Framework (UNDAF) is the UN System’s coherent and collective response for addressing inequalities in Bangladesh. The project is aligned with the UNDAF’s pillar five ‘Climate Change, Environment, Disaster Risk Reduction and Response’

Implementing Arrangement:

The project will be executed according to UNDP’s National Implementation Modality (NIM), as per the NIM project management implementation guidelines agreed by UNDP and the Government of Bangladesh.

Project Organogram, Management Structure and Responsibilities



Stakeholders of the project:

The main stakeholders of the project are Bangladesh Forest Department and local fishermen. The industries, tour operators, maritime traffics are the other stakeholders. In and around the project area.

Project site

Irrawaddy Dolphin (*Orcaella brevirostris*) and Ganges dolphin (*Platanista gangetica*) are two of the globally significant species and are threatened in their general distribution areas across the globe. However, the Sunderbans and its surrounding areas still support healthy populations of the two species. Yet unsustainable fishery, increasing maritime traffic, tourism, vessel collision, unplanned economic development, poaching, land-use change, climate change etc. are making the aquatic ecosystems of the Sunderbans more and more vulnerable. Therefore, the Sunderbans has been identified as implementation site for the project to ensure long term survivability of the two species at global scale.

3. OBJECTIVES OF MIDTERM REVIEW

The MTR will assess progress towards the achievement of the project objectives and outcomes as specified in the Project Document and assess early signs of project success or failure with the goal of identifying the necessary changes to be made in order to set the project on-track to achieve its intended results. The MTR will also review the project's strategy, its risks to sustainability.

4. MTR APPROACH & METHODOLOGY

The MTR must provide evidence based information that is credible, reliable and useful. The MTR team will review all relevant sources of information including documents prepared during the preparation phase (i.e. PIF, UNDP Initiation Plan, UNDP Environmental & Social Safeguard Policy, the Project Document, project reports including Annual Project Review/PIRs, project budget revisions, lesson learned reports, national strategic and legal documents, and any other materials that the team considers useful for this evidence-based review). The MTR team will review the baseline GEF focal area Tracking Tool submitted to the GEF at CEO endorsement, and the midterm GEF focal area Tracking Tool that must be completed before the MTR field mission begins.

The MTR team is expected to follow a collaborative and participatory approach¹ ensuring close engagement with the Project Team, government counterparts (the GEF Operational Focal Point), the UNDP Country Office(s), UNDP-GEF Regional Technical Advisers, and other key stakeholders.

Engagement of stakeholders is vital to a successful MTR.² Stakeholder involvement should include interviews with stakeholders who have project responsibilities, including but not limited to (*Bangladesh Forest Department, local community and fishers, tour operators, maritime traffic*); executing agencies, senior officials and task team/ component leaders, key experts and consultants in the subject area, Project Board, project stakeholders, academia, local government and CSOs, etc. Additionally, the MTR team is expected to conduct field missions to (*Khulna and Bagerhat, Satkhira*), including the following project sites (*Mongla, Dhangmari, Chandpai, saronkhola*).

The final MTR report should describe the full MTR approach taken and the rationale for the approach making explicit the underlying assumptions, challenges, strengths and weaknesses about the methods and approach of the review.

5. DETAILED SCOPE OF THE MTR

The MTR team will assess the following four categories of project progress. See the *Guidance For Conducting Midterm Reviews of UNDP-Supported, GEF-Financed Projects* for extended descriptions.

i. Project Strategy

Project design:

- Review the problem addressed by the project and the underlying assumptions. Review the effect of any incorrect assumptions or changes to the context to achieving the project results as outlined in the Project Document.

¹ For ideas on innovative and participatory Monitoring and Evaluation strategies and techniques, see [UNDP Discussion Paper: Innovations in Monitoring & Evaluating Results](#), 05 Nov 2013.

² For more stakeholder engagement in the M&E process, see the [UNDP Handbook on Planning, Monitoring and Evaluating for Development Results](#), Chapter 3, pg. 93.

- Review the relevance of the project strategy and assess whether it provides the most effective route towards expected/intended results. Were lessons from other relevant projects properly incorporated into the project design?
- Review how the project addresses country priorities. Review country ownership. Was the project concept in line with the national sector development priorities and plans of the country (or of participating countries in the case of multi-country projects)?
- Review decision-making processes: were perspectives of those who would be affected by project decisions, those who could affect the outcomes, and those who could contribute information or other resources to the process, taken into account during project design processes?
- Review the extent to which relevant gender issues were raised in the project design. See Annex 9 of *Guidance For Conducting Midterm Reviews of UNDP-Supported, GEF-Financed Projects* for further guidelines.
- If there are major areas of concern, recommend areas for improvement.

Results Framework/Logframe:

- Undertake a critical analysis of the project’s logframe indicators and targets, assess how “SMART” the midterm and end-of-project targets are (Specific, Measurable, Attainable, Relevant, Time-bound), and suggest specific amendments/revisions to the targets and indicators as necessary.
- Are the project’s objectives and outcomes or components clear, practical, and feasible within its time frame?
- Examine if progress so far has led to, or could in the future catalyse beneficial development effects (i.e. income generation, gender equality and women’s empowerment, improved governance etc...) that should be included in the project results framework and monitored on an annual basis.
- Ensure broader development and gender aspects of the project are being monitored effectively. Develop and recommend SMART ‘development’ indicators, including sex-disaggregated indicators and indicators that capture development benefits.

ii. Progress Towards Results

Progress Towards Outcomes Analysis:

- Review the logframe indicators against progress made towards the end-of-project targets using the Progress Towards Results Matrix and following the *Guidance For Conducting Midterm Reviews of UNDP-Supported, GEF-Financed Projects*; colour code progress in a “traffic light system” based on the level of progress achieved; assign a rating on progress for each outcome; make recommendations from the areas marked as “Not on target to be achieved” (red).

Table. Progress Towards Results Matrix (Achievement of outcomes against End-of-project Targets)

Project Strategy	Indicator ³	Baseline Level ⁴	Level in 1 st PIR (self-reported)	Midterm Target ⁵	End-of-project Target	Midterm Level & Assessment ⁶	Achievement Rating ⁷	Justification for Rating
------------------	------------------------	-----------------------------	--	-----------------------------	-----------------------	---	---------------------------------	--------------------------

³ Populate with data from the Logframe and scorecards

⁴ Populate with data from the Project Document

⁵ If available

⁶ Colour code this column only

⁷ Use the 6 point Progress Towards Results Rating Scale: HS, S, MS, MU, U, HU

<p>Objective: To build capacity to manage the existing protected areas established for dolphin conservation and also expand their operational coverage (new protected areas and buffer areas) while still meeting the livelihood aspirations of local communities especially the fishers.</p>	<p>Indicator (if applicable): a) Extent of aquatic environment of the Sundarbans brought under effective conservation planning and management framework b) Population status of the following critical species remain stable or increases: Ganges freshwater dolphin Irrawaddy dolphin</p>	<p>a) 0 ha b) 225 451</p>			<p>a) 102,000 ha b) Remain stable or increase by project end</p>			
<p>Outcome 1: Important aquatic ecosystems of the Sundarbans supporting the globally threatened species of cetaceans conserved</p>	<p>Indicator 1: Improved management effectiveness PAs as measured and recorded by Management Effectiveness Tracking Tool (METT)</p>	<p>46 out of 300</p>			<p>Increase in METT scores (at least around 70 out of 300) by 30 percent by year 5</p>			

	<p>Indicator 2: Biodiversity-friendly Sectoral Guidelines prepared and implemented leading to effective integration of biodiversity considerations into economic sector practices</p>	0	0		At least five Sectoral Guidelines (Fishes, Tourism, Maritime traffic, industrial development and Aquaculture prepared and adopted.			
	<p>Indicator 3: Effective and functioning cross-sectoral, multi-stakeholder institutions (including conservation, livelihood and production) established at regional and national level.</p>	0		2				
	<p>Indicator 4: Number of representatives from the key government sectors trained in effective management of aquatic biodiversity</p>	0		Conservation Sector - 100 Economic Sector - 100				
	<p>Indicator 5: Reported mortality of dolphins by entanglement in nets and vessel hit</p>	90 reports in 2013		50% reduction by year project end				

<p>Outcome 2:</p> <p>Community-based ecosystems management systems in place to support aquatic biodiversity conservation</p>	<p>Indicator 6:</p> <p>Number of fishers in the project area using sustainable fishing gear as evidenced by mesh size</p>	0		30% of fishers follow the mesh size norms set up by the project by project end				
	<p>7:</p> <p>Amount of resources flowing to local communities annually from community based ecotourism activities</p> <p>Indicator</p>	0		USD 0.1 million by year 5 (target value to be re-confirmed during the 1st year of the project)				
	<p>8:</p> <p>Number of people shifting to alternative income generating options that reduce pressure on biodiversity</p> <p>Indicator</p>	0		At least 500 fishers by year 3 and 700 by project end				
	<p>9:</p> <p>Number of people sensitized on aquatic biodiversity conservation particularly that of cetaceans</p>	0		3000 by year 3 and 5000 by project end				

Etc.								

Indicator Assessment Key

Green= Achieved	Yellow= On target to be achieved	Red= Not on target to be achieved
-----------------	----------------------------------	-----------------------------------

In addition to the progress towards outcomes analysis:

- Compare and analyse the GEF Tracking Tool at the Baseline with the one completed right before the Midterm Review.
- Identify remaining barriers to achieving the project objective in the remainder of the project.
- By reviewing the aspects of the project that have already been successful, identify ways in which the project can further expand these benefits.

iii. Project Implementation and Adaptive Management

Management Arrangements:

- Review overall effectiveness of project management as outlined in the Project Document. Have changes been made and are they effective? Are responsibilities and reporting lines clear? Is decision-making transparent and undertaken in a timely manner? Recommend areas for improvement.
- Review the quality of execution of the Executing Agency/Implementing Partner(s) and recommend areas for improvement.
- Review the quality of support provided by the GEF Partner Agency (UNDP) and recommend areas for improvement.

Work Planning:

- Review any delays in project start-up and implementation, identify the causes and examine if they have been resolved.
- Are work-planning processes results-based? If not, suggest ways to re-orientate work planning to focus on results?
- Examine the use of the project’s results framework/ logframe as a management tool and review any changes made to it since project start.

Finance and co-finance:

- Consider the financial management of the project, with specific reference to the cost-effectiveness of interventions.
- Review the changes to fund allocations as a result of budget revisions and assess the appropriateness and relevance of such revisions.
- Does the project have the appropriate financial controls, including reporting and planning, that allow management to make informed decisions regarding the budget and allow for timely flow of funds?
- Informed by the co-financing monitoring table to be filled out, provide commentary on co-financing: is co-financing being used strategically to help the objectives of the project? Is the Project Team meeting with all co-financing partners regularly in order to align financing priorities and annual work plans?

Project-level Monitoring and Evaluation Systems:

- Review the monitoring tools currently being used: Do they provide the necessary information? Do they involve key partners? Are they aligned or mainstreamed with national systems? Do they use existing information? Are they efficient? Are they cost-effective? Are additional tools required? How could they be made more participatory and inclusive?

- Examine the financial management of the project monitoring and evaluation budget. Are sufficient resources being allocated to monitoring and evaluation? Are these resources being allocated effectively?

Stakeholder Engagement:

- Project management: Has the project developed and leveraged the necessary and appropriate partnerships with direct and tangential stakeholders?
- Participation and country-driven processes: Do local and national government stakeholders support the objectives of the project? Do they continue to have an active role in project decision-making that supports efficient and effective project implementation?
- Participation and public awareness: To what extent has stakeholder involvement and public awareness contributed to the progress towards achievement of project objectives?

Reporting:

- Assess how adaptive management changes have been reported by the project management and shared with the Project Board.
- Assess how well the Project Team and partners undertake and fulfil GEF reporting requirements (i.e. how have they addressed poorly-rated PIRs, if applicable?)
- Assess how lessons derived from the adaptive management process have been documented, shared with key partners and internalized by partners.

Communications:

- Review internal project communication with stakeholders: Is communication regular and effective? Are there key stakeholders left out of communication? Are there feedback mechanisms when communication is received? Does this communication with stakeholders contribute to their awareness of project outcomes and activities and investment in the sustainability of project results?
- Review external project communication: Are proper means of communication established or being established to express the project progress and intended impact to the public (is there a web presence, for example? Or did the project implement appropriate outreach and public awareness campaigns?)
- For reporting purposes, write one half-page paragraph that summarizes the project's progress towards results in terms of contribution to sustainable development benefits, as well as global environmental benefits.

iv. Sustainability

- Validate whether the risks identified in the Project Document, Annual Project Review/PIRs and the ATLAS Risk Management Module are the most important and whether the risk ratings applied are appropriate and up to date. If not, explain why.
- In addition, assess the following risks to sustainability:

Financial risks to sustainability:

- What is the likelihood of financial and economic resources not being available once the GEF assistance ends (consider potential resources can be from multiple sources, such as the public and private sectors, income generating activities, and other funding that will be adequate financial resources for sustaining project's outcomes)?

Socio-economic risks to sustainability:

- Are there any social or political risks that may jeopardize sustainability of project outcomes? What is the risk that the level of stakeholder ownership (including ownership by governments and other key stakeholders) will be insufficient to allow for the project outcomes/benefits to be

sustained? Do the various key stakeholders see that it is in their interest that the project benefits continue to flow? Is there sufficient public / stakeholder awareness in support of the long term objectives of the project? Are lessons learned being documented by the Project Team on a continual basis and shared/ transferred to appropriate parties who could learn from the project and potentially replicate and/or scale it in the future?

Institutional Framework and Governance risks to sustainability:

- Do the legal frameworks, policies, governance structures and processes pose risks that may jeopardize sustenance of project benefits? While assessing this parameter, also consider if the required systems/ mechanisms for accountability, transparency, and technical knowledge transfer are in place.

Environmental risks to sustainability:

- Are there any environmental risks that may jeopardize sustenance of project outcomes?

Conclusions & Recommendations

The MTR team will include a section of the report setting out the MTR’s evidence-based conclusions, in light of the findings.⁸

Recommendations should be succinct suggestions for critical intervention that are specific, measurable, achievable, and relevant. A recommendation table should be put in the report’s executive summary. See the *Guidance For Conducting Midterm Reviews of UNDP-Supported, GEF-Financed Projects* for guidance on a recommendation table.

The MTR team should make no more than 15 recommendations total.

Ratings

The MTR team will include its ratings of the project’s results and brief descriptions of the associated achievements in a *MTR Ratings & Achievement Summary Table* in the Executive Summary of the MTR report. See Annex E for ratings scales. No rating on Project Strategy and no overall project rating is required.

Table. MTR Ratings & Achievement Summary Table for (*Project Title*)

Measure	MTR Rating	Achievement Description
Project Strategy	N/A	

⁸ Alternatively, MTR conclusions may be integrated into the body of the report.

Progress Towards Results	Objective: To build capacity to manage the existing protected areas established for dolphin conservation and also expand their operational coverage (new protected areas and buffer areas) while still meeting the livelihood aspirations of local Achievement Rating: (rate 6 pt. scale)	
	Outcome 1 Important aquatic ecosystems of the Sundarbans supporting the globally threatened species of cetaceans conserved Achievement Rating: (rate 6 pt. scale)	
	Outcome 2 Community-based ecosystems management systems in place to support aquatic biodiversity conservation Achievement Rating: (rate 6 pt. scale)	
	Outcome 3 Achievement Rating: (rate 6 pt. scale)	
	Etc.	
Project Implementation & Adaptive Management	(rate 6 pt. scale)	
Sustainability	(rate 4 pt. scale)	

6. TIMEFRAME

The total duration of the MTR will be approximately 25 days (*4 weeks*) starting (*1st November 2018*), and shall not exceed one month from when the consultant is hired. The tentative MTR timeframe is as follows:

TIMEFRAME	ACTIVITY
25/10/18	Application closes
30/10/18	Select MTR Team
(01/11/18)	Prep the MTR Team (handover of Project Documents)
(03/11/18) 02 days (recommended: 2-4)	Document review and preparing MTR Inception Report

(05/11/18) 02 days	Finalization and Validation of MTR Inception Report- latest start of MTR mission
(12/11/18) 07 days (r: 7-15)	MTR mission: stakeholder meetings, interviews, field visits
(15/11/18)	Mission wrap-up meeting & presentation of initial findings- earliest end of MTR mission
(20/11/18) 05 days (r: 5-10)	Preparing draft report
(21/11/18) 02 days (r: 1-2)	Incorporating audit trail from feedback on draft report/Finalization of MTR report
(23/11/18)	Preparation & Issue of Management Response
(24/11/18)	(optional) Concluding Stakeholder Workshop (not mandatory for MTR team)
(25/11/18)	Expected date of full MTR completion

Options for site visits should be provided in the Inception Report.

7. MIDTERM REVIEW DELIVERABLES

#	Deliverable	Description	Timing	Responsibilities
1	MTR Inception Report	MTR team clarifies objectives and methods of Midterm Review	No later than 5 days before the MTR mission	MTR team submits to the Commissioning Unit and project management
2	Presentation	Initial Findings	End of MTR mission	MTR Team presents to project management and the Commissioning Unit
3	Draft Final Report	Full report (using guidelines on content outlined in Annex B) with annexes	Within 20 days of the MTR mission	Sent to the Commissioning Unit, reviewed by RTA, Project Coordinating Unit, GEF OFP
4	Final Report*	Revised report with audit trail detailing how all received comments have (and have not) been addressed in the final MTR report	Within 25 days of receiving UNDP comments on draft	Sent to the Commissioning Unit

*The final MTR report must be in English. If applicable, the Commissioning Unit may choose to arrange for a translation of the report into a language more widely shared by national stakeholders.

8. MTR ARRANGEMENTS

The principal responsibility for managing this MTR resides with the Commissioning Unit. The Commissioning Unit for this project's MTR is UNDP Bangladesh Country office (*In the case of single-country projects, the Commissioning Unit is the UNDP Country Office. In the case of regional projects and jointly-implemented projects, typically the principal responsibility for managing this MTR resides with the country or agency or regional coordination body – please confirm with the UNDP-GEF team in the region – that is receiving the larger proportion of GEF financing. For global*

projects, the Commissioning Unit can be the UNDP-GEF Directorate or the lead UNDP Country Office).

The commissioning unit will contract the consultants and ensure the timely provision of per diems and travel arrangements within the country for the MTR team. The Project Team will be responsible for liaising with the MTR team to provide all relevant documents, set up stakeholder interviews, and arrange field visits.

9. TEAM COMPOSITION

A team of two independent consultants will conduct the MTR - one team leader (with experience and exposure to projects and evaluations in other regions globally) and one team expert, usually from the country of the project. The consultants cannot have participated in the project preparation, formulation, and/or implementation (including the writing of the Project Document) and should not have a conflict of interest with project's related activities.

The selection of consultants will be aimed at maximizing the overall "team" qualities in the following areas: *(give a weight to all these qualifications so applicants know what is the max amount of points they can earn for the technical evaluation)*

- Recent experience with result-based management evaluation methodologies;
- Experience applying SMART indicators and reconstructing or validating baseline scenarios;
- Competence in adaptive management, as applied to *(biodiversity conservation)*;
- Experience working with the GEF or GEF-evaluations;
- Experience working in *(Asia especially south Asian countries)*;
- Work experience in relevant technical areas for at least 10 years;
- Demonstrated understanding of issues related to gender and *(biodiversity conservation)*; experience in gender sensitive evaluation and analysis.
- Excellent communication skills;
- Demonstrable analytical skills;
- Project evaluation/review experiences within United Nations system will be considered an asset;
- A Master's degree in (a discipline relevant to Natural Resource Management(NRM), biodiversity conservation, environmental science, development planning, project management or other closely related field)

10. PAYMENT MODALITIES AND SPECIFICATIONS

10% of payment upon approval of the final MTR Inception Report
30% upon submission of the draft MTR report
60% upon finalization of the MTR report

Or, as otherwise agreed between the Commissioning Unit and the MTR team.

11. APPLICATION PROCESS⁹

Recommended Presentation of Proposal:

- a) **Letter of Confirmation of Interest and Availability** using the [template](#)¹⁰ provided by UNDP;
- b) **CV** and a **Personal History Form (P11 form)**¹¹;
- c) **Brief description of approach to work/technical proposal** of why the individual considers him/herself as the most suitable for the assignment, and a proposed methodology on how they will approach and complete the assignment; (max 1 page)
- d) **Financial Proposal** that indicates the all-inclusive fixed total contract price and all other travel related costs (such as flight ticket, per diem, etc), supported by a breakdown of costs, as per template attached to the Letter of Confirmation of Interest template. If an applicant is employed by an organization/company/institution, and he/she expects his/her employer to charge a management fee in the process of releasing him/her to UNDP under Reimbursable Loan Agreement (RLA), the applicant must indicate at this point, and ensure that all such costs are duly incorporated in the financial proposal submitted to UNDP.

All application materials should be submitted to the address (fill address) in a sealed envelope indicating the following reference “Consultant for (*Expanding the Protected Area System to Incorporate Important Aquatic Ecosystems Projec*) Midterm Review” or by email at the following address ONLY: (fill email) by (**time and date**). Incomplete applications will be excluded from further consideration.

Criteria for Evaluation of Proposal: Only those applications which are responsive and compliant will be evaluated. Offers will be evaluated according to the Combined Scoring method – where the educational background and experience on similar assignments will be weighted at 70% and the price proposal will weigh as 30% of the total scoring. The applicant receiving the Highest Combined Score that has also accepted UNDP’s General Terms and Conditions will be awarded the contract.

ToR ANNEX A: List of Documents to be reviewed by the MTR Team

1. PIF
2. UNDP Initiation Plan
3. UNDP Project Document
4. UNDP Environmental and Social Screening results
5. Project Inception Report
6. All Project Implementation Reports (PIR’s)
7. Quarterly progress reports and work plans of the various implementation task teams
8. Audit reports
9. Finalized GEF focal area Tracking Tools at CEO endorsement and midterm (*fill in specific TTs for this project’s focal area*)
10. Oversight mission reports
11. All monitoring reports prepared by the project
12. Financial and Administration guidelines used by Project Team

The following documents will also be available:

⁹ Engagement of the consultants should be done in line with guidelines for hiring consultants in the POPP: <https://info.undp.org/global/popp/Pages/default.aspx>

¹⁰ <https://intranet.undp.org/unit/bom/psa/Support%20documents%20on%20IC%20Guidelines/Template%20for%20Confirmation%20of%20Interest%20and%20Submission%20of%20Financial%20Proposal.docx>

¹¹ http://www.undp.org/content/dam/undp/library/corporate/Careers/P11_Personal_history_form.doc

13. Project operational guidelines, manuals and systems
14. UNDP country/countries programme document(s)
15. Minutes of the (*Expanding the Protected Area System to Incorporate Important Aquatic Ecosystems Project*) Board Meetings and other meetings (i.e. Project Appraisal Committee meetings)
16. Project site location maps

ToR ANNEX B: Guidelines on Contents for the Midterm Review Report¹²

- i. Basic Report Information (*for opening page or title page*)
 - Title of UNDP supported GEF financed project
 - UNDP PIMS# and GEF project ID#
 - MTR time frame and date of MTR report
 - Region and countries included in the project
 - GEF Operational Focal Area/Strategic Program
 - Executing Agency/Implementing Partner and other project partners
 - MTR team members
 - Acknowledgements
- ii. Table of Contents
- iii. Acronyms and Abbreviations
1. Executive Summary (*3-5 pages*)
 - Project Information Table
 - Project Description (brief)
 - Project Progress Summary (between 200-500 words)
 - MTR Ratings & Achievement Summary Table
 - Concise summary of conclusions
 - Recommendation Summary Table
2. Introduction (*2-3 pages*)
 - Purpose of the MTR and objectives
 - Scope & Methodology: principles of design and execution of the MTR, MTR approach and data collection methods, limitations to the MTR
 - Structure of the MTR report
3. Project Description and Background Context (*3-5 pages*)
 - Development context: environmental, socio-economic, institutional, and policy factors relevant to the project objective and scope
 - Problems that the project sought to address: threats and barriers targeted
 - Project Description and Strategy: objective, outcomes and expected results, description of field sites (if any)
 - Project Implementation Arrangements: short description of the Project Board, key implementing partner arrangements, etc.
 - Project timing and milestones
 - Main stakeholders: summary list
4. Findings (*12-14 pages*)
 - 4.1 Project Strategy
 - Project Design
 - Results Framework/Logframe
 - 4.2 Progress Towards Results
 - Progress towards outcomes analysis
 - Remaining barriers to achieving the project objective
 - 4.3 Project Implementation and Adaptive Management
 - Management Arrangements
 - Work planning
 - Finance and co-finance

¹² The Report length should not exceed 40 pages in total (not including annexes).

- Project-level monitoring and evaluation systems
 - Stakeholder engagement
 - Reporting
 - Communications
- 4.4 Sustainability
- Financial risks to sustainability
 - Socio-economic to sustainability
 - Institutional framework and governance risks to sustainability
 - Environmental risks to sustainability
5. Conclusions and Recommendations (4-6 pages)
- 5.1 Conclusions
- Comprehensive and balanced statements (that are evidence-based and connected to the MTR’s findings) which highlight the strengths, weaknesses and results of the project
- 5.2 Recommendations
- Corrective actions for the design, implementation, monitoring and evaluation of the project
 - Actions to follow up or reinforce initial benefits from the project
 - Proposals for future directions underlining main objectives
6. Annexes
- MTR ToR (excluding ToR annexes)
 - MTR evaluative matrix (evaluation criteria with key questions, indicators, sources of data, and methodology)
 - Example Questionnaire or Interview Guide used for data collection
 - Ratings Scales
 - MTR mission itinerary
 - List of persons interviewed
 - List of documents reviewed
 - Co-financing table (if not previously included in the body of the report)
 - Signed UNEG Code of Conduct form
 - Signed MTR final report clearance form
 - *Annexed in a separate file:* Audit trail from received comments on draft MTR report
 - *Annexed in a separate file:* Relevant midterm tracking tools (*METT, FSC, Capacity scorecard, etc.*)

ToR ANNEX C: Midterm Review Evaluative Matrix Template

Evaluative Questions	Indicators	Sources	Methodology
Project Strategy: To what extent is the project strategy relevant to country priorities, country ownership, and the best route towards expected results?			
(include evaluative question(s))	(i.e. relationships established, level of coherence between project design and implementation approach, specific activities conducted, quality of risk mitigation strategies, etc.)	(i.e. project documents, national policies or strategies, websites, project staff, project partners, data collected throughout the MTR mission, etc.)	(i.e. document analysis, data analysis, interviews with project staff, interviews with stakeholders, etc.)
Progress Towards Results: To what extent have the expected outcomes and objectives of the project been achieved thus far?			
Project Implementation and Adaptive Management: Has the project been implemented efficiently, cost-effectively, and been able to adapt to any changing conditions thus far? To what extent are project-level monitoring and evaluation systems, reporting, and project communications supporting the project’s implementation?			

Sustainability: To what extent are there financial, institutional, socio-economic, and/or environmental risks to sustaining long-term project results?			

ToR ANNEX D: UNEG Code of Conduct for Evaluators/Midterm Review Consultants¹³

Evaluators/Consultants:

1. Must present information that is complete and fair in its assessment of strengths and weaknesses so that decisions or actions taken are well founded.
2. Must disclose the full set of evaluation findings along with information on their limitations and have this accessible to all affected by the evaluation with expressed legal rights to receive results.
3. Should protect the anonymity and confidentiality of individual informants. They should provide maximum notice, minimize demands on time, and respect people's right not to engage. Evaluators must respect people's right to provide information in confidence, and must ensure that sensitive information cannot be traced to its source. Evaluators are not expected to evaluate individuals, and must balance an evaluation of management functions with this general principle.
4. Sometimes uncover evidence of wrongdoing while conducting evaluations. Such cases must be reported discreetly to the appropriate investigative body. Evaluators should consult with other relevant oversight entities when there is any doubt about if and how issues should be reported.
5. Should be sensitive to beliefs, manners and customs and act with integrity and honesty in their relations with all stakeholders. In line with the UN Universal Declaration of Human Rights, evaluators must be sensitive to and address issues of discrimination and gender equality. They should avoid offending the dignity and self-respect of those persons with whom they come in contact in the course of the evaluation. Knowing that evaluation might negatively affect the interests of some stakeholders, evaluators should conduct the evaluation and communicate its purpose and results in a way that clearly respects the stakeholders' dignity and self-worth.
6. Are responsible for their performance and their product(s). They are responsible for the clear, accurate and fair written and/or oral presentation of study limitations, findings and recommendations.
7. Should reflect sound accounting procedures and be prudent in using the resources of the evaluation.

MTR Consultant Agreement Form

Agreement to abide by the Code of Conduct for Evaluation in the UN System:

Name of Consultant: _____

Name of Consultancy Organization (where relevant): _____

I confirm that I have received and understood and will abide by the United Nations Code of Conduct for Evaluation.

Signed at _____ (*Place*) on _____ (*Date*)

Signature: _____

¹³ www.undp.org/unegcodeofconduct

ToR ANNEX E: MTR Ratings

Ratings for Progress Towards Results: (one rating for each outcome and for the objective)		
6	Highly Satisfactory (HS)	The objective/outcome is expected to achieve or exceed all its end-of-project targets, without major shortcomings. The progress towards the objective/outcome can be presented as “good practice”.
5	Satisfactory (S)	The objective/outcome is expected to achieve most of its end-of-project targets, with only minor shortcomings.
4	Moderately Satisfactory (MS)	The objective/outcome is expected to achieve most of its end-of-project targets but with significant shortcomings.
3	Moderately Unsatisfactory (HU)	The objective/outcome is expected to achieve its end-of-project targets with major shortcomings.
2	Unsatisfactory (U)	The objective/outcome is expected not to achieve most of its end-of-project targets.
1	Highly Unsatisfactory (HU)	The objective/outcome has failed to achieve its midterm targets, and is not expected to achieve any of its end-of-project targets.

Ratings for Project Implementation & Adaptive Management: (one overall rating)		
6	Highly Satisfactory (HS)	Implementation of all seven components – management arrangements, work planning, finance and co-finance, project-level monitoring and evaluation systems, stakeholder engagement, reporting, and communications – is leading to efficient and effective project implementation and adaptive management. The project can be presented as “good practice”.
5	Satisfactory (S)	Implementation of most of the seven components is leading to efficient and effective project implementation and adaptive management except for only few that are subject to remedial action.
4	Moderately Satisfactory (MS)	Implementation of some of the seven components is leading to efficient and effective project implementation and adaptive management, with some components requiring remedial action.
3	Moderately Unsatisfactory (MU)	Implementation of some of the seven components is not leading to efficient and effective project implementation and adaptive, with most components requiring remedial action.
2	Unsatisfactory (U)	Implementation of most of the seven components is not leading to efficient and effective project implementation and adaptive management.
1	Highly Unsatisfactory (HU)	Implementation of none of the seven components is leading to efficient and effective project implementation and adaptive management.

Ratings for Sustainability: (one overall rating)		
4	Likely (L)	Negligible risks to sustainability, with key outcomes on track to be achieved by the project’s closure and expected to continue into the foreseeable future
3	Moderately Likely (ML)	Moderate risks, but expectations that at least some outcomes will be sustained due to the progress towards results on outcomes at the Midterm Review
2	Moderately Unlikely (MU)	Significant risk that key outcomes will not carry on after project closure, although some outputs and activities should carry on
1	Unlikely (U)	Severe risks that project outcomes as well as key outputs will not be sustained

ToR ANNEX F: MTR Report Clearance Form

(to be completed by the Commissioning Unit and UNDP-GEF RTA and included in the final document)

Midterm Review Report Reviewed and Cleared By:	
Commissioning Unit	
Name: _____	
Signature: _____	Date: _____
UNDP-GEF Regional Technical Advisor	
Name: _____	
Signature: _____	Date: _____

