



IEO | INDEPENDENT
Evaluation Office
United Nations Development Programme

ANNEXES

INDEPENDENT COUNTRY PROGRAMME EVALUATION – MALI

Contents

Annex 1. EVALUATION TERMS OF REFERENCE	1
Annex 2. COUNTRY PROGRAMME OVERVIEW	10
Annex 3. PEOPLE CONSULTED	12
Annex 4. DOCUMENTS CONSULTED	16
Annex 5. 2017 MAP OF UNDP PROJECTS	18

Annex 1. EVALUATION TERMS OF REFERENCE

1. INTRODUCTION

The Independent Evaluation Office (IEO) of the United Nations Development Programme (UNDP) conducts “Independent Country Programme Evaluations (ICPEs)”, previously called “Assessments of Development Results (ADRs),” to capture and demonstrate evaluative evidence of UNDP’s contributions to development results at the country level, as well as the effectiveness of UNDP’s strategy in facilitating and leveraging national effort for achieving development results. The purpose of an ICPE is to:

- Support the development of the next UNDP Country Programme Document.
- Strengthen accountability of UNDP to national stakeholders.
- Strengthen accountability of UNDP to the Executive Board.

ICPEs are independent evaluations carried out within the overall provisions contained in the UNDP Evaluation Policy.¹ The IEO is independent of UNDP management and is headed by a Director who reports to the UNDP Executive Board. The responsibility of the IEO is two-fold: (a) provide the Executive Board with valid and credible information from evaluations for corporate accountability, decision-making and improvement; and (b) enhance the independence, credibility and utility of the evaluation function, and its coherence, harmonization and alignment in support of United Nations reform and national ownership.

This is the first country-level evaluation conducted by the IEO in Mali; it is conducted in close collaboration with the Government of Mali, UNDP Mali country office, and UNDP Regional Bureau for Africa (RBA). Results of the ICPE are expected to feed into the development of the new country programme 2020-2024.

2. NATIONAL CONTEXT

Mali, a vast landlocked country, is located in north-western Africa, bordering Algeria, Mauritania, Senegal, Guinea, Burkina Faso, and Niger. The country has a total area of 1 241 238 km², with significant variations in population density between its regions.² The total population of Mali is 17.8 million.³

Long considered a politically stable country, and a model for democracy in the region, Mali has been governed, since 1991, by civilian governments elected through democratic, multiparty elections held every five years. However, in 2012, fighting erupted between Government forces and Tuareg rebels, leading to a political and security crisis that has resulted in dire economic and social consequences. In January 2013, French-led military forces were deployed, which handed over to the United Nations Multidimensional Integrated Stabilization Mission in Mali (MINUSMA) in July 2013. Negotiations between government and rebel coalitions culminated in the signing of a peace agreement in 2015 (“Accord d’Alger”), which highlighted the need for decentralization and regional development, particularly in the North.

In July and August 2013, presidential elections deemed transparent and credible were held with the joint support of UNDP and MINUSMA. The current Head of State is President Ibrahim Boubacar Keita, who holds a five-year mandate with a two-term limit imposed by the 1992 Constitution. The President appoints

¹ See UNDP Evaluation Policy http://web.undp.org/evaluation/documents/policy/2016/Evaluation_policy_EN_2016.pdf. The evaluations are conducted in adherence to the Norms and the Standards and the ethical Code of Conduct set by the United Nations Evaluation Group (www.uneval.org).

² Le PNUD au Mali, “A propos du Mali”: <http://www.ml.undp.org/content/mali/fr/home/countryinfo.html>

³ As of 2015. UNDP, Human Development Reports <http://hdr.undp.org/en/indicators/44206>

the Prime Minister, who, as the Head of Government, holds executive power and shares legislative power with the National Assembly.

After a decade of solid economic growth (5.7% on average for 2000-2010)⁴, the 2012 crisis had a severe impact on the country's economy. Net GDP growth rates went from 0% in 2012, to 1.7% in 2013 and reached 7.0% in 2014.⁵ Between 2015 and 2017, economic growth reached 5.5% on average. Mali's agriculture, fishing and livestock sector represented approximately 40% of the GDP in the 2012-2015 period, and accounted for just under half of that period's economic growth. Due to its potential demographic and economic impact, the development of the primary sector is a major challenge for the country, as it is subject to climate change and price fluctuations for primary commodities. Agriculture employs around two thirds of the workforce in Mali, making inclusive growth in the country highly dependent on the sector's prospects.⁶

In 2016, Mali's Human Development Index was 0.442, ranking it 175 out of 188 countries in the 2016 index, which positions the country in the Low Human Development category.⁷ Progress towards the MDGs deteriorated due to the 2012 political and security crisis, with poverty rates increasing between 2012 and 2013. Overall progress on health indicators show encouraging results, but the nutritional situation remains precarious and access to quality health services must be further focused on in future governmental plans. The CSCRIP framework had allocated 8% of its 2012-2014 budget to the health sector, but only 5% was spent on this sector.⁸ Education is a clear priority of Mali's Governmental action plan for 2013-2018, and a key sector in the CSCRIP, representing a fifth of its budget, which shows the government's commitment to improving schooling in the country.

The Government adopted in November 2016 the Strategic Framework for Economic Recovery and Sustainable Development 2016-2018 as a reference framework for the design, implementation and monitoring of various development policies and strategies. The CREDD is the new National Development Strategy which integrates all of the government's strategic orientations and makes it possible to realize the ambition displayed by the latter and the Technical and Financial Partners of a single reference document reflecting development priorities for the 2016-2018 period. It was adopted by the Council of Ministers on April 27, 2016 and formally approved by Decree No. 2016-0889 / P-RM of November 23, 2016 as a national policy document. Thus, the priorities of Mali's Plan for Sustainable Recovery (PRED 2013-2014), the Government Action Program (PAG 2013-2018), the Accelerated Development Program of the Northern Regions (PDA/ RN), New challenges of the Agreement for Peace and Reconciliation in Mali are translated into this new single reference document, making it possible to bring all these policies and strategies into coherence.

Gender equality, and in particular women's participation in economic and political activities, remains an important challenge. In 2015, Mali's Gender Inequality Index (GII) value was 0.689, ranking it 156th out of 159 countries. In Mali, 8.8 percent of parliamentary seats are held by women, and 7.3 percent of adult women have reached at least a secondary level of education – compared to 16.2 percent of their male counterparts. Female participation in the labour market is 50.1 percent compared to 82.3 for men.⁹

Mali's key environmental challenges arise from desertification, natural disasters and decreasing rainfall due to climate change. Due to the large share of a rural, small-farm holding population, impacts of environmental challenges negatively affect livelihoods and food security. Mali was hit by a drought in 2011, resulting in poor harvests, and floods in 2012, further compounding the regional inequalities preceding the 2012 conflict and political crisis¹⁰. Rapid demographic growth and urbanization puts additional pressure on natural

⁴ African Economic Outlook (AEO), 2017

⁵ Rapport de mise en œuvre à mi-parcours du CSCRIP 2012-2017, 2015. The 2013 growth rate was updated to 2.3% (source : World Bank data)

⁶ International Monetary Fund, Mali Country Report No. 15/340, December 2015

⁷ UNDP, Human Development Report briefing note for Mali, 2016.

⁸ Rapport de mise en œuvre à mi-parcours du CSCRIP 2012-2017, 2015

⁹ UNDP, Human Development Report briefing note for Mali, 2016.

¹⁰ European Parliament, Mali: Economic factors behind the crisis, 2014.

resources, and access to water is also a key concern. In 2014, the country adopted a national policy for climate change, as well as a strategic framework for investment and sustainable land management (*Cadre stratégique d'investissement et de Gestion durable des terres – CSI-GDT*).

3. UNDP PROGRAMME STRATEGY IN MALI

Mali's most recent UNDAF was developed by the UNCT in Mali for the period of 2015-2019, in coordination with the Ministry of Foreign Affairs, African Integration and International Cooperation, and with 20 funds and agencies of the United Nations System¹¹.

In accordance with the UNDAF which has become UNDAF+ to take into account the presence of the United Nations Multidimensional Integrated Mission in Mali (MINUSMA), a Country Programme Document (CPD) was developed for 2015-2019. The CPD addresses all four UNDAF results areas, i.e. Peace, security and national reconciliation; Governance; Basic social services (GFATM and HIV-AIDS focused), and Sustainable development and inclusive growth, through the 4 corresponding outcomes and 11 programme outputs indicated in Table 1.

Table 1: Country Programme outcomes and indicative resources (2015-2019)		
UNDAF / Country Programme Outcome [Programme area]	UNDP specific country programme outputs	Indicative resources (US\$ millions)
By 2019, social cohesion is facilitated by transitional justice, community dialogue, culture and peace education. [Peace, security and national reconciliation]	The institutions responsible for the national reconciliation process have the technical and operational skills needed to drive social cohesion-building for sustainable peace.	6.5
	Decentralized and local authorities and civil society (community leaders, religious leaders, women's and youth organizations) in the north have the necessary capabilities for local conflict prevention and resolution.	6.5
	IDP reintegration and rehabilitation is ensured through the effective implementation of a sustainable solutions strategy.	11.943
By 2019, vulnerable populations, particularly women and young people, benefit from productive capacities in a healthy (natural) environment that is conducive to poverty reduction.	Ministries in charge of the economy, finance and planning have improved their capacity for policy formulation, public finance management and aid coordination in order to stimulate broad-based growth and reduce inequality	18.5
	The resilience of the most vulnerable populations in rural areas is strengthened through better use of natural resources, promotion of disaster and climate risk reduction, utilization of renewable energy sources and better access to economic opportunities and financial services.	49

¹¹ FAO, ILO, IOM, OCHA, OHCHR, UNCDF, UNCTAD, UNDP, UNEP, UNESCO, UNFPA, UN-Habitat, UNHCR, UNICEF, UNIDO, UNMAS, UNODC, UNOPS, UN Women, WFP and WHO.

[Sustainable development and inclusive growth]	The planning, evaluation and resource allocation capacities of the institutions responsible for the environment are strengthened to implement sectoral plans that better integrate poverty-environment links, disaster and climate risk reduction concerns.	3.5
By 2019, State, national and local institutions fulfil their public service mission more effectively, and non-State actors participate and provide citizen oversight in accordance with the principles of good governance and the rule of law.	Parliament's legislative and government oversight capacities are strengthened.	9.5
	The justice reform and the redeployment of the administration in the regions of Gao, Kidal and Timbuktu are consolidated to strengthen State authority and the rule of law.	38
	The institutional capacity of bodies in charge of decentralization and of local civil society are strengthened for the effective transfer of powers and resources to local authorities.	14.5
[Governance]		
By 2019, communities, especially the most vulnerable groups and those affected by the crisis, will have increased and equitable access to and use of quality basic health care.	Coordination, management and monitoring capacities of the Ministry of Health, civil society and subrecipients are strengthened for an effective response to HIV.	30
	Quality prevention and treatment services are available to achieve a significant decline in the HIV prevalence rate.	
[Basic social services]		
Total		187.943

Source: UNDP Mali Country Programme Document 2015-2019

4. SCOPE OF THE EVALUATION

The ICPE will focus on the current programme cycle, i.e. 2015 – 2019, while also considering the cumulative results of projects running from the past programme cycle into the current one to provide a set of forward-looking recommendations as input to UNDP Mali’s formulation of its next country programme.

The ICPE will focus on UNDP’s contributions to the country as defined at the outcome level in the CPD or any underlying strategies that may have been developed or adapted during the period under review. In line with the CPD’s identified programme priorities, the ICPE will assess the results of programmes implemented through advisory support and capacity building of target groups and institutions. The ICPE covers interventions funded by all sources of finance, including UNDP regular (“core”) resources, thematic funds, donor funds and government funds.

In line with UNDP’s gender mainstreaming strategy the ICPE will examine the level of gender mainstreaming across all of UNDP Mali programmes and operations. Gender disaggregated data will be collected, where available, and assessed against its programme outcomes.

5. METHODOLOGY

The ICPE will address the following three key evaluation questions¹²:

1. What did the UNDP country programme intend to achieve during the period under review?
2. To what extent has the programme achieved (or is likely to achieve) its intended objectives?
3. What factors contributed to or hindered UNDP's performance, and eventually, to the sustainability of results?

Specific factors that explain UNDP's performance will be examined in alignment with the engagement principles, drivers of development and alignment parameters of the Strategic Plan¹³, as well as through alignment with the SDGs, the utilization of resources to deliver results and how managerial practices impacted achievement of programmatic goals.¹⁴ To assess the above, the evaluation will take into account country-specific and other factors that may have shaped UNDP's engagement in the country and contributed to, or hindered, UNDP's performance.

The ICPE is conducted at the outcome level. A Theory of Change (ToC)¹⁵ approach will be applied in consultation with the stakeholders, where appropriate. Discussions of the ToC will focus on mapping the assumptions made about a programme's desired change and causal linkages expected and these will form a basis for the data collection approach that will verify the theories behind the changes found. Where data gaps are apparent, a qualitative approach will be taken to fill those gaps to aid in the evaluation process.

Assessment of data collection constraints and existing data. An evaluability assessment was carried out to understand potential data collection constraints and opportunities. The assessment outlined the level of evaluable data that is available. The Evaluation Resource Centre information indicates that 24 decentralized evaluations were carried out for the 2008-2014 cycle, although of those only one outcome, one thematic and two UNDAF evaluations were carried out. For the 2015-2019 cycle, to date 16 evaluations were completed, all of which are project-based. Six (6) remaining evaluations are planned, of which one CPD mid-term evaluation is planned in December 2017. With respect to indicators, the CPD and the corporate planning system associated with it also provide baselines, indicators and targets; updated 2016 data, where available, has been provided for each CPD indicator in the corporate system. Mali's own statistical capacity, as measured by the World Bank's Statistical Capacity Indicator¹⁶ is considered fair, and has been consistently above the average for countries in Sub-Saharan Africa. The National Statistical Institute (INSTAT)¹⁷, which received support from UNDP, publishes updated statistical data, and conducted annual household surveys

¹² The ICPEs have adopted a streamlined methodology, which differs from the previous ADRs that were structured according to the four standard OECD DAC criteria.

¹³ The Strategic Plan 2014-2017 engagement principles include: national ownership and capacity; human rights-based approach; sustainable human development; gender equality and women's empowerment; voice and participation; South-South and triangular cooperation; active role as global citizens; and universality.

¹⁴ This information is extracted from analysis of the goals inputted in the Enhanced RBM platform, the financial results in the Executive Snapshot, the results in the Global Staff Survey, and interviews at the management/ operations in the country office.

¹⁵ Theory of Change is an outcome-based approach which applies critical thinking to the design, implementation and evaluation of initiatives and programmes intended to support change in their contexts. At a minimum, it is considered to encompass discussion of the following elements: (1) context for the initiative, including social, political and environmental conditions; long-term change that the initiative seeks to support and for whose ultimate benefit; process/sequence of change anticipated to lead to desired long-term outcome; and (2) assumptions about how these changes may happen, a check on whether activities and outputs are appropriate for influencing change in the desired direction in this context; diagram and narrative summary that captures the outcome of the discussion. Source: Vogel, Isabel, "Review of the use of 'Theory of Change' in International Development" (April 2012), DFID.

¹⁶ <http://datatopics.worldbank.org/statisticalcapacity/SCIDashboard.aspx>

¹⁷ <http://www.instat-mali.org>

since 2011. The CSCRP 2012-2017 and CREDD 2016-2018 were accompanied by a detailed indicator matrix, which facilitated monitoring the progress made on its key objectives.¹⁸

Due to the current security situation in Mali, constraints to primary data collection do exist. Incidents occurring in the past years have prompted UNDSS to categorize five out of eight regions in the Substantial (4) or High (5) security levels¹⁹, and the threat of incidents occurring in northern Mali is still very high. The capital Bamako, however, remains relatively calm. Given the geographical dispersion of project locations²⁰ and taking security considerations into account, the evaluation will consult with the country office to determine the accessibility of project locations. Some data collection will take place in Bamako, and further interviews with programme partners and beneficiaries located outside of the capital will be conducted from the capital, to fill remaining data gaps.

Data collection methods and analysis. The evaluation will use data from primary and secondary sources, including desk review of documentation and interviews with key stakeholders, including beneficiaries, partners and managers. An early survey will be administered to counterparts in the country office at the onset of data collection and the evaluation team may reach out to select stakeholders on key questions through a second survey, to validate corporately available self-reported data. (e.g. ROARs).

A multi-stakeholder approach will be followed and consultations and interviews will include government representatives, civil-society organizations, private-sector representatives, UN agencies, multilateral organizations, bilateral donors, and beneficiaries of the programme. At the start of the evaluation, a stakeholder analysis will be conducted to identify all relevant UNDP partners, as well as those who may not work with UNDP, but play a key role in the outcomes to which UNDP contributes. Focus groups will be used to consult some groups of beneficiaries as appropriate. Special attention will be given to integrate a gender equality responsive approach to the evaluation methods and reporting. The evaluation will use existing nationally produced data (i.e. from INSTAT or the CSCRP review), to the extent possible.

A list of projects will be developed, based on a purposive sampling for in-depth review of clusters that represent the major area of intervention of UNDP in the country. The criteria for selection includes programme coverage (a balanced selection of key focus areas/issues under each outcome), maturity, budgetary and geographical considerations, and the gender marker.²¹ Attention will be paid to include both flagship projects of significant scope, outreach, and visibility, as well as those that experienced challenges.

The IEO and the country office will identify an initial list of background and programme-related documents. The following secondary data will be included in the review: background documents on the national context, documents prepared by international partners during the period under review and documents prepared by other agencies in the UNCT; programme plans and frameworks; progress reports; monitoring self-assessments such as the yearly UNDP Results Oriented Annual Reports (ROARs); and evaluations conducted by the country office and partners. The ICPE will also support, where possible and appropriate, the ongoing data collection endeavours being undertaken by UNDP projects for outcome monitoring.

The evaluation will use triangulation of information collected from different sources and/or by different methods to ensure that the data is valid.

¹⁸ Cf. Annexe 1, in Rapport de mise en œuvre à mi-parcours du CSCRP 2012-2017, 2015

¹⁹ <https://trip.dss.un.org/dssweb/traveladvisory.aspx>

²⁰ http://open.undp.org/#2017/filter/operating_unit-MLI

²¹ The gender marker, a corporate tool at UNDP, is assigned for all projects, using scores from 3 to 0. A score of 3 means the project has gender equality as the main objective ; a 2 indicates that the intended outputs that have gender equality as a significant objective. A 1 signifies outputs that will contribute in some way to gender equality, but not significantly, and a 0 refers to outputs that are not expected to contribute noticeably to gender equality.

6. MANAGEMENT ARRANGEMENTS

Independent Evaluation Office of UNDP: The IEO will conduct the ICPE in consultation with the UNDP Mali country office, the RBA, and Government of Mali. The IEO lead evaluator will manage the evaluation and coordinate the evaluation team. The IEO will meet all costs directly related to the conduct of the ICPE.

UNDP country office in Mali: The country office will support the evaluation team to liaise with key partners and other stakeholders and ensure that all necessary information regarding UNDP’s programmes, projects and activities in the country is available to the team, and provide factual verifications of the draft report on a timely basis. The country office will provide the evaluation team in kind organizational support (e.g. arranging meetings with project staff, stakeholders, beneficiaries; assistance for project site visits). To ensure the independence of the views expressed, country office staff will not participate in interviews and meetings with stakeholders held for data collection purposes. The country office will jointly organize the final stakeholder meeting, ensuring participation of key government counterparts, through a video-conference with the IEO, where findings and results of the evaluation will be presented. Additionally, the country office will support the use and dissemination of the final outputs of the ICPE process.

UNDP Regional Bureau for Africa: The UNDP RBA will support the evaluation through information sharing and will also participate in discussions on emerging conclusions and recommendations.

Evaluation Team: The IEO will constitute an evaluation team to undertake the ICPE with expertise in integrating a gender and human rights based approach to evaluations. The evaluation team will include:

- **Lead Evaluator (LE):** IEO staff member with overall responsibility for developing the evaluation design and terms of reference; managing the conduct of the ICPE; preparing / finalizing the final report; and organizing the stakeholder preliminary and final debriefing, as appropriate, with the country office. The LE will also be supporting in the field the thematic coverage of the area of Sustainable Development.
- **Consultants:** 2 independent consultants (preferably national or regional consultants) will be recruited to assess the other three areas of national reconciliation, governance and social development. Under the guidance of the LE, they will conduct preliminary desk review, data collection in the field, prepare sections of the report as required, and contribute to the preparation and review of the final ICPE report.
- **Associate Evaluator (AE):** IEO member to backstop the ICPE, with responsibility for research, collection of data and key documents; support the development of the evaluation design and terms of reference; coordinate and consolidate inputs from evaluation consultants for the finalization of the final report; and liaising, as appropriate, with the country office. The AE will also be providing support in covering the specific outputs within the area of Sustainable Development, and other areas as required.

The roles of the different members of the evaluation team can be summarised in Table 2.

Table 2: Data collection responsibilities by area	
Team member	Area / Outcome
Lead Evaluator	Sustainable Development (supported by national and regional consultants)
Associate Evaluator	Primarily support on Sustainable Development , and other programme areas as needed, together with support from the national and regional consultants
Regional evaluation consultant	National Reconciliation and Credible Institutions/Governance
National evaluation consultant	Social Development, Health and HIV as well as support on Governance and Sustainable Development areas as needed, with specific attention to gender mainstreaming and GEWE results and developing the mission agenda

7. EVALUATION PROCESS

The ICPE will be conducted according to the approved IEO process. The following represents a summary of the five key phases of the process, which constitute the framework for conducting the evaluation.

Phase 1: Preparatory work. The IEO prepares the TOR and the evaluation design and recruits additional evaluation team members, comprising international and/or national development professionals. They will be recruited once the TOR is approved. The IEO starts collecting data and documentation internally first and then filling data gaps with help from the UNDP country office, and external resources through various methods.

Phase 2: Desk analysis. Further in-depth data collection is conducted, by administering an “early survey” and interviews (via phone, Skype etc.) with key stakeholders, including country office staff. Based on these, the key evaluation questions will guide the evaluation matrix containing detailed questions and means of data collection and verification to guide data collection based on an overall evaluation matrix for the ICPEs. Evaluation team members conduct desk reviews of reference material, prepare a summary of context and background information, and identify the outcome theory of change, gaps and issues that will require validation during the field-based phase of data collection.

Phase 3: Field data collection. The phase will commence in February 2018. During this phase, the evaluation team undertakes a mission to the country to engage in data collection activities. The estimated duration of the mission is a total of 3 calendar weeks. Data will be collected according to the approach outlined in Section 5 with responsibilities outlined in Section 6. The evaluation team will liaise with CO staff and management, key government stakeholders and other partners and beneficiaries. At the end of the mission, the evaluation team holds a formal debrief presentation of the key preliminary findings at the country office.

Phase 4: Analysis, report writing, quality review and debrief. Based on the analysis of data collected and triangulated, the LE will undertake a synthesis process to produce the ICPE report. The first draft (“zero draft”) of the ICPE report will be subject to peer review by the IEO and the International Evaluation Advisory Panel (IEAP). Once the first draft is quality cleared it will be circulated to the country office and the UNDP Regional Bureau for Africa for review including factual corrections. The second draft, which takes into account any factual corrections, will be shared with national stakeholders for further comments. Any necessary additional corrections will be made and the UNDP Mali country office will prepare the management response to the ICPE, under the overall oversight of the regional bureau.

The report will then be shared at a final debriefing where the results of the evaluation are presented to key national stakeholders. Ways forward will be discussed with a view to creating greater ownership by national stakeholders in taking forward the recommendations and strengthening national accountability of UNDP. Taking into account the discussion at the stakeholder event, the final evaluation report will be published.

Phase 5: Publication and dissemination. The ICPE report and brief summary will be widely distributed in hard and electronic versions. The initial and final versions of the ICPE report will be produced in *English* and follow the standard IEO publication guidelines. A French version of the report will be produced, as needed and requested by the country office. The evaluation report will be made available to UNDP Executive Board at the time of its CPD approval. It will be distributed by the IEO within UNDP as well as to the evaluation units of other international organisations, evaluation societies/networks and research institutions in the region. The Mali country office and the Government of Mali will disseminate the report to stakeholders

in the country. The report and the management response will be published on the UNDP website²² as well as in the Evaluation Resource Centre. The regional bureau will be responsible for monitoring and overseeing the implementation of follow-up actions in the Evaluation Resource Centre.²³

8. TIMEFRAME FOR THE ICPE PROCESS

The timeframe and responsibilities for the evaluation process are tentatively²⁴ as follows:

Table 3: Timeframe for the ICPE process		
Activity	Responsible party	Proposed timeframe
Phase 1: Preparatory work		
TOR – approval by the Independent Evaluation Office	LE	December
Selection of other evaluation team members	LE	January
Phase 2: Desk analysis		
Preliminary analysis of available data and context analysis	Evaluation team	January
Phase 3: Data collection		
Data collection and preliminary findings	Evaluation team	February 1 - 23
Phase 4: Analysis, report writing, quality review and debrief		
Analysis and Synthesis	LE	March - April
Zero draft ICPE for clearance by IEO	LE	Early May
First draft ICPE for CO/RB review	CO/RBA	June
Second draft shared with GOV	CO/GOV	July
Draft management response	CO/RBA	July
Final debriefing with national stakeholders	CO/LE	July
Phase 5: Production and Follow-up		
Editing and formatting	IEO	August
Final report and Evaluation Brief	IEO	August
Dissemination of the final report	IEO/CO	September

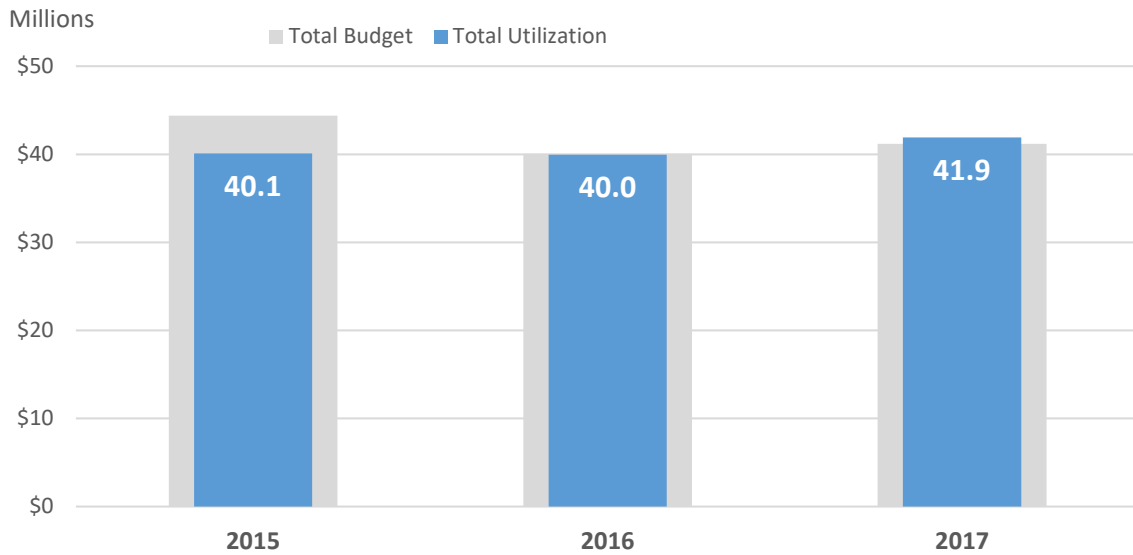
²² web.undp.org/evaluation

²³ erc.undp.org

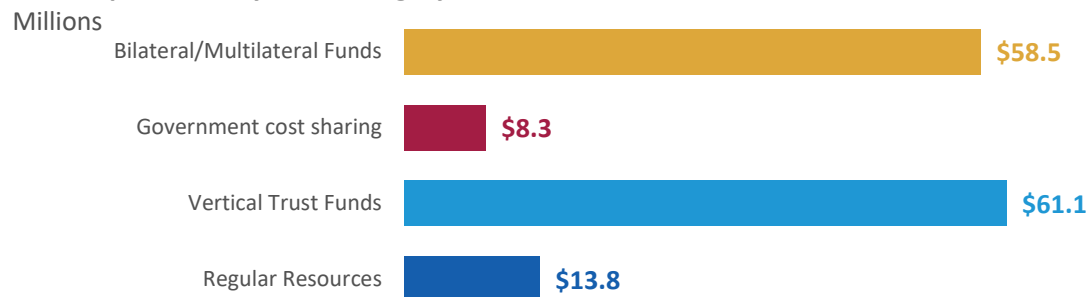
²⁴ The timeframe is indicative, and does not imply full-time engagement of the evaluation team during the period.

Annex 2. COUNTRY PROGRAMME OVERVIEW

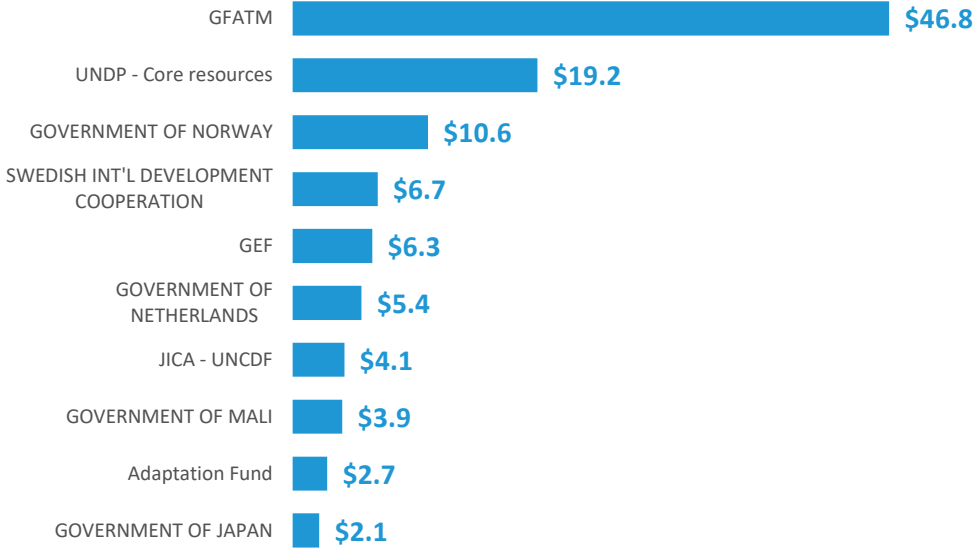
Evolution of Programme Budget and Expenditures, 2015-2017



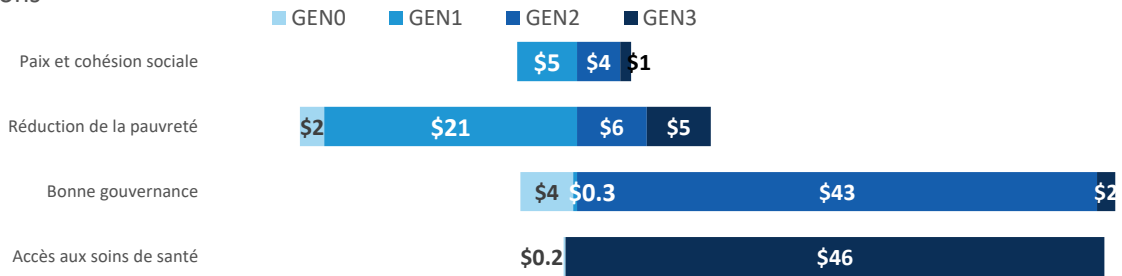
Total Expenditure by Fund Category, 2015-2017



Top 10 Donors - UNDP programme, 2015-2017



Expenditure by Gender Marker and Outcome Millions



Annex 3. PEOPLE CONSULTED

Government and Governmental agencies of Mali

AG KHALIOU Anara, Chef division Jeunesse et sport, DRJS Tombouctou

BEN Fatouma Albadja , Directrice régionale Tombouctou , DRPFEF

CAMARA Adama , Chef division Promotion de la Femme , DRPFEF Sikasso

DIABATE Mamoutou, Président Projet PAOSC II, AMPRODE SAHEL

GAKOU Mamadou, Directeur National-Direction Nationale des Eaux et Foret

GAMBY Modibo, chef de village, Sémébougou Diawando

GUINDO Adama, Régisseur Maison d'Arrêt de Bamako Coura

GUINDO Aliou, Préfet-Cercle de Mopti

KANTE Marie Claire Dembélé , CAEF , Gouvernorat Sikasso

KEITA Abdoulaye , Chef Unité Suivi Évaluation , DRPFEF Sikasso

KEITA Fatoumata Samaké, Directrice régionale Sikasso, DRPFEF

KONIMBA Michel, Directeur régional- Direction régionale des eaux et forêt de Sikasso

NAZIM Mohamed, Procureur Général-Cour d'appel de Mopti

SANOGO Abdoulaye, Directeur Agence pour la Promotion des Exportations

SAWADOGO Tassiré, Secrétaire Général Commune de Sio

SIDIBE Drissa Mansa, Secrétariat Harmonisation de l'Aide

SIDIBE Lassana , Directeur Régional de la Jeunesse et des sports , DRJS Tombouctou

SOUMAOURO Fousseyni, Point focal - Direction régionale des eaux et forêt de Sikasso

SOW Ousmane, Commissaire de Police-Commissariat de Police de Mopti

SYLLA Mody, Directeur Régional Adjoint, Direction Régionale Agriculture

TOGO Felix, Directeur régional-Direction régional de l'agriculture de Sikasso

TOUMAGNON Hawa Ba, Directrice CPS, Ministère de la Justice et Garde des Sceaux

TOURE Baba, Chargé de S&E PF VIH SIDA-Cellule de Lutte contre le VIH SIDA, DRS Sikasso

TOURE Tidiane Cheick Amadou, Point focal GDTE-Direction régionale des eaux et forêt de Sikasso

TRAORE Dramane, Chargé de la Planification, DRS Sikasso

TRAORE Hamadou Bara, Maire-Commune de Sio

TRAORE Joachim, Secrétaire Général Commune urbaine de Mopti

Programme beneficiaries

ARBY Fata Dédéou, Membre, Association Sabu Galanga

BABA Kadidia, Membre, Association Sabu Galanga

BACHIR Fatouma, Membre, Association Sabu Galanga

BASSOUM Oumou, Présidente-Association des femmes Sabaly de Sémébougou Diawando, Ségou

BENGALY Mariam, Comité de surveillance (adjointe), Coopérative « Djiguiya »

CISSE Amina, Présidente , Association Sabu Galanga de Tombouctou

CISSE Baljissa, Membre, Association Sabu Galanga

CISSE Dédéou, Membre, Association Sabu Galanga

DAOU Athia, Meunière , association Sabaly

DIAKITE Bayatenin, Membre Coopérative « Djiguiya »

DIAKITE Marietou, Présidente-Coopérative « Djiguiya » des femmes transformatrices de fruits et légumes de Yanfolila

DIALLO Fanta, meunière, association Sabaly

DIALLO Kinsa, Membre, Coopérative « Djiguiya »

DIALLO Sidiki, Association des Planteurs, Coopérative « Djiguiya »

DICKO Ibrahim, Bénéficiaire-Camps de Jeunesse de Soufroulaye (Mopti)

DOUGNON Amadou, Technicien-Centrale solaire de soufroulaye (Mopti)

DOUMBIA, Membre Coopérative « Djiguiya »

FANE Hawa, Membre, Coopérative « Djiguiya »

GAMBY Fatoumata, meunière, association Sabaly

HAMABELE Kadidia , Trésorière, Association Sabu Galanga

KAMIA Soumaila, Secrétaire administratif-Centrale solaire de soufroulaye (Mopti)

KANE Mariam, Secrétaire Administrative, Coopérative « Djiguiya »

KANTE Fatoumata, Coopérative « Djiguiya »

KANTE Korotoumou, Coopérative « Djiguiya »

KAREMBE Madiou, Bénéficiaire-Camps de Jeunesse de Soufroulaye (Mopti)

KONATE Mori Moussa, Directeur Exécutif-SECO ONG
MAHAMANE Assa, Membre, Association Sabu Galanga
MAIGA Kadidia, Bénéficiaire-Camps de Jeunesse de Soufroulaye (Mopti)
NIAGADOU Tata, Membre, association Sabaly
OUMOU Bassoum, Présidente , association Sabaly
SIDIBE Bourama, Maintenance Coopérative « Djiguiya »
SIDIBE CAMARA Fatoumata, Trésorière Coopérative « Djiguiya »
SIDIBE Djibril, Directeur-Camps de Jeunesse de Soufroulaye (Mopti)
SIDIBE Hawa, Membre Coopérative « Djiguiya »
SIDIBE, Présidente comité de surveillance, Coopérative « Djiguiya »
TANDINA Arkia , Membre, Association Sabu Galanga
TOURE Aichatou, Membre, Association Sabu Galanga
TRAORE Daouda Moustaph , Chargé de Programme , SECO ONG

Development partners and other UN Agencies

ACKEBO Felix, Représentant Adjoint UNICEF
BENHAYOUNE Loubna, Directrice de la section Stabilisation et Relèvement , MINUSMA
DIARRA Kéké, Point focal Tombouctou, UNFPA
DJIRE Hawa, Représentante a.i. ONUFEMMES
MBARANGA Gasarabwe, Représentante Spéciale adjointe du Secrétaire général des Nations Unies au Mali, Coordinatrice humanitaire, Coordinatrice résidente du Système des Nations unies au Mali
NEGUE Francis, Spécialiste Suivi-Evaluation, Bureau de la Coordinatrice Résidente
SOW Kola, Charge de programme de décentralisation, Ambassade du Danemark
STRAMMER Geza, Chef de Coopération, Délégation de l'Union Européenne au Mali

UNDP

BA Alassane, Economiste National
BAGALE Maina, Chargé Projet Accès à la Justice
BAGNOU Abdoulaye, Coordonnateur Unité de gestion programme fonds mondial
COULIBALY Adame, Cluster Environnement et développement durable
DADA Soultane, Projet Jeunesse et Résilience, PNUD Tombouctou

DIARRA Becaye, Economiste Principal

DICKO Baber, Cluster Environnement et développement durable

DIOP Maleye, Deputy Country Director, Chargé des Programmes

KEITA Mariam, Cluster Environnement et développement durable

KOULIBALY Aboubacar, Country Director

MANGASSOUBA Chiekhna, Responsable Unité PMS

MIRINDI Albert, Spécialiste Genre

N'DAW Fatou, Point focal restauration de l'autorité de l'état bureau Commun Sévaré /Mopti

TAMBOURA Oumar, Responsable Cluster Environnement et développement durable

TOURE Abou, Responsable Operations

TOURE Mounaissa, Point focal Jeunesse résilience bureau Commun Sévaré /Mopti

TRAORE Tsagao, Spécialiste Droits Humains, Cluster Gouvernance

TRAORE Yacouba, Chef Section Finances

ZONGO Michael Max Aristide, Chargé Programme VNU

Annex 4. DOCUMENTS CONSULTED

African Economic Outlook (AEO), 2017

Bureau du Coordinateur Résident, Note d'information sur les Programmes Conjoints au Mali, « unis dans l'action » à travers les Programmes Conjoints, juin 2016 ;

DTM Mali, "Matrice de Suivi des déplacements », December 2014

ENSAN Mali, Rapport de Synthèse - Enquête Nationale Sur La Sécurité Alimentaire Et Nutritionnelle, Février 2017

European Parliament, Mali: Economic factors behind the crisis, 2014

Friedrich-Ebert-Stiftung, Bureau Bamako, "Mali-Mètre – Enquête d'opinion "Que pensent les Maliens?", Nr. 9, 2017

Gouvernement du Mali Et Programme des Nations Unies pour le Développement : Prévention et traitement du VIH au Mali Round VIII du Fonds Mondial, Phase II.

Gouvernement du Mali Et Programme des Nations Unies pour le Développement Projet de Renforcement de la Réponse Nationale au VIH au Mali

Institut National de la Statistique du Mali, Résultats annuels de l'EMOP 2017/2018

International Monetary Fund, Mali Country Report No. 15/340, December 2015

PNUD : Document provisoire de la stratégie et du plan d'action genre pour le bureau pays du PNUD-MALI (2018-2020) ; décembre 2017

PNUD, "UNDP offer on SDG implementation in fragile situations", 2016

PNUD, Human Development Report briefing note for Mali, 2016.

PNUD, plan de contingence national pour l'assistance humanitaire, Novembre 2017

PNUD, rapport d'évaluation final du Programme d'Appui à la Gouvernance, à la Résilience Économique pour la Réduction de la Pauvreté, décembre 2016

PNUD, stratégie nationale de réduction des risques de catastrophes, Juin 2013.

PNUD, UNDP Youth Strategy 2014-2017, "Empowered Youth, Sustainable Future" (2014)

PNUD/AEDD, Document de Projet : Programme d'Appui à l'Adaptation aux changements climatiques dans les communes le plus vulnérables des régions de Mopti et de Tombouctou, Décembre 2015 ;

PNUD/AEDD, Document de Projet : Programme de Réduction des effets néfastes des changements climatiques dans le Delta intérieur du Niger (PRENCC), Décembre 2016 ;

PNUD/Ministère de l'Environnement et de l'Assainissement, Document de Projet : Appui à l'Amélioration de l'Environnement à travers les actions communautaires, Août 2010 ;

PNUD/Ministère de l'Environnement, de l'Assainissement et du Développement Durable, Document de Projet : Programme d'Appui à la mise en œuvre de la stratégie nationale du Mali sur les changements climatiques, Juillet 2016

PNUD-Mali, Document de Programme Pays 2015-2019

PNUD-Mali, Document de Projet : Améliorer la capacité d'adaptation et de résilience face aux changements climatiques dans le secteur Agricole, juin 2010 ;

PNUD-Mali, Results Oriented Annual Report, 2015 ;

PNUD-Mali, Results Oriented Annual Report, 2016 ;

Republic of Mali. Voluntary National Review for the implementation of the Sustainable Development Goals, July 2018.

République du Mali / MINISTÈRE DE LA PROMOTION DE LA FEMME, DE L'ENFANT ET DE LA FAMILLE : Politique Nationale Genre /Mali, 2011

République du Mali : Cadre national stratégique de lutte contre le VIH/sida 2013

République du Mali, Bamako, Cadre Stratégique pour la Croissance et la Réduction de la Pauvreté CSCR (2012-2017)

République du Mali, Bamako, Cadre Stratégique pour la Relance Economique et le Développement Durable du Mali CREDD 2016-2018

République du Mali, Bamako, Documents de revue annuelle 2017 du Cadre Stratégique pour la Croissance et la Réduction de la Pauvreté CSCR (2012-2017)

République du Mali, Bamako, Plan pour la Relance Durable du Mali PRED 2013-2014

République du Mali, Bamako, Programme d'Action du Gouvernement, PAG (2013-2018)

République du Mali, Bamako, Programme de Développement Accéléré des Régions du Nord PDARN, APRM Juin 2014,

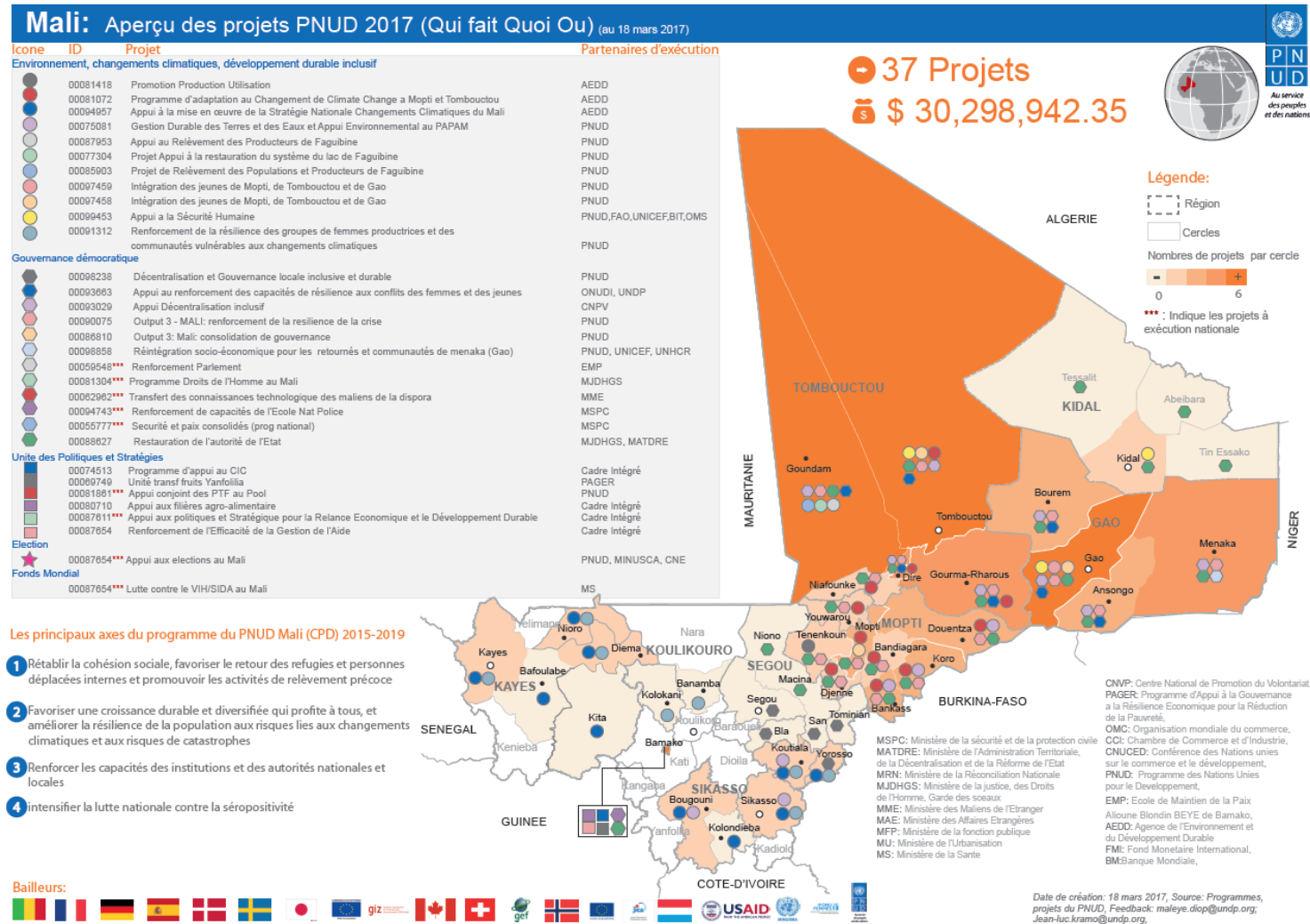
SNU-Mali, Cadre des Nations Unies pour l'Assistance au Développement UNDAF+ 2015-2019

Sustainable Energy for All (SE4All) – Mali, Country Statistics, <https://www.se4all-africa.org/seforall-in-africa/country-data/mali/>

UNV Youth Volunteering Strategy 2014-2017, <https://www.unv.org/publications/unv-youth-volunteering-strategy-2014-2017>

World Bank, Country data website, <http://data.worldbank.org/country/Mali>

Annex 5. 2017 MAP OF UNDP PROJECTS



Source: UNDP country office